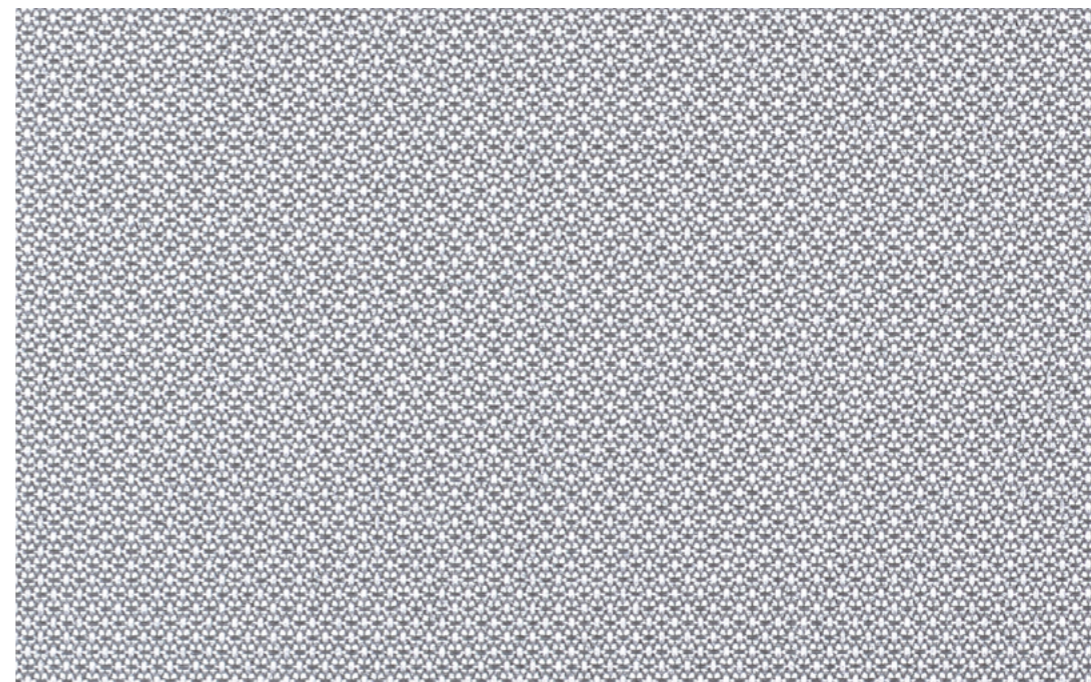




Nr. 122039000002008/Verosol



ClearView

Where view through meets visual and thermal comfort

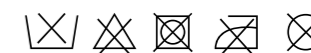
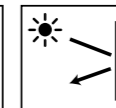
The new standard for exceptional view through

- Extraordinary in the market; solar reflectance of 74% on metallised polyester screens
- Openness factor of 3% provides excellent view through while maintaining heat and glare control
- "Excellent visibility" - Best view through rate by ITA RWTH Aachen University
- Available in a width up to 2.75 meter

kvadrat verosol

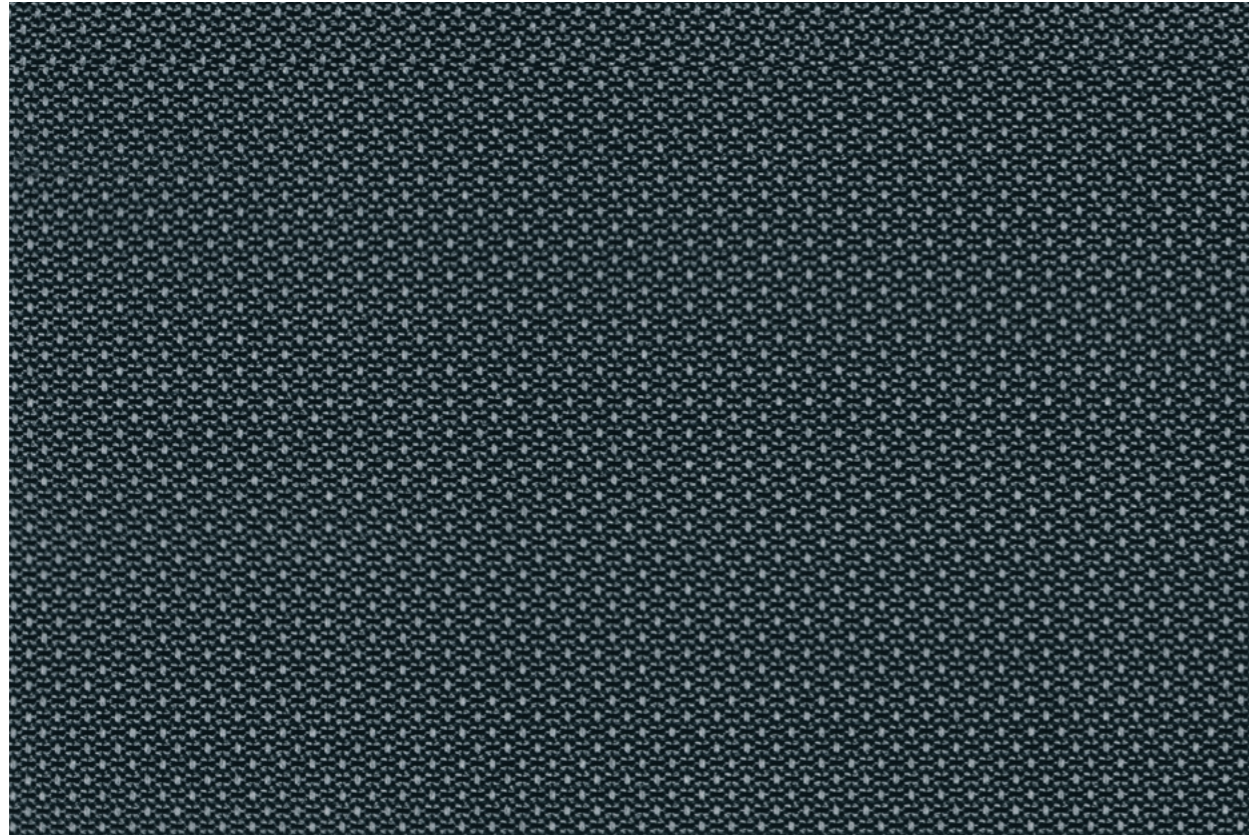


Management System
ISO 9001:2015
ISO 14001:2015
www.tuv.com
ID: 9186621700



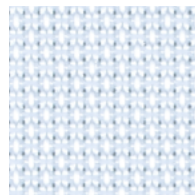
www.kvadratverosol.nl

Transparencies



833 3% OF

Colours



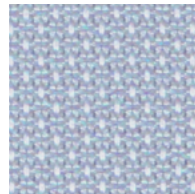
000 White



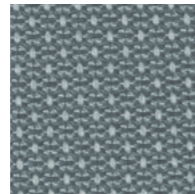
741 Sand beige



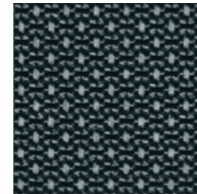
765 Dark beige



936 Steel Grey



998 Dark Grey



829 Black

Specifications 833 ClearView

	Openness factor	3%
	Thickness (mm)	0.41
	Weight (g/m ²)	210
	Width (cm)	275 max.
	Composition	Polyester
	IR emissivity (metal side)	0.21
	Flame retardant standards	EN13501-1 B-s1,d0, DIN4102 B1, BS 5867 part 2 type B, NFPA 701
	Environmental standards	STANDARD 100 Class IV by OEKO-TEX®, HPD2.1, RoHS2, REACH, GreenGuard (LEED), GreenGuard Gold, Formaldehyde free, Halogen free, Phthalate free, antimicrobials free, PVC free

	White	Black	
	Solar reflectance outside	74%	74%
	Light transmission	4%	3%
	Visual contact according to EN 14501:2021	2	2
	Glare control rating according to EN 14501:2021	3	3
	View through rate according to ITA RWTH Aachen University*	Excellent visibility	Excellent visibility

	Solar control double glass (Glazing G EN14501:2021)			Insulating double glass (Glazing F EN14501:2021)			
	Glazing performance	White	Black	Glazing performance	White	Black	
	Light Transmission LT value	70%	3%	2%	82%	4%	3%
	Solar heat gain g-value / SHGC	33%	12%	12%	65%	27%	27%
	Insulation U-value (W/m ² K)	1.0	0.73	0.73	1.1	0.77	0.77
	Solar control triple glass (Glazing I)			Insulating triple glass (Glazing H EN14501:2021)			
	Glazing performance	White	Black	Glazing performance	White	Black	
	Light Transmission LT value	64%	3%	2%	74%	4%	3%
	Solar heat gain g-value / SHGC	31%	13%	13%	53%	25%	25%
	Insulation U-value (W/m ² K)	0.6	0.50	0.50	0.7	0.57	0.57

Optical properties are measured according to EN 14500, ISO 9050, ASTM C1371 & EN 410. For more information about technical data, energy savings and worldwide distribution, refer to www.kvadratverosol.nl. Disclaimer: The technical data is based on average data and is subject to production tolerances. Subject to misprints, errors and technical modifications. All technical details per colour available upon request.

*Independent research by ITA RWTH Aachen University.

The colours shown may vary from the supplied fabric due to batch variation in the production process. Please visit www.kvadratverosol.nl to order samples of your choice.