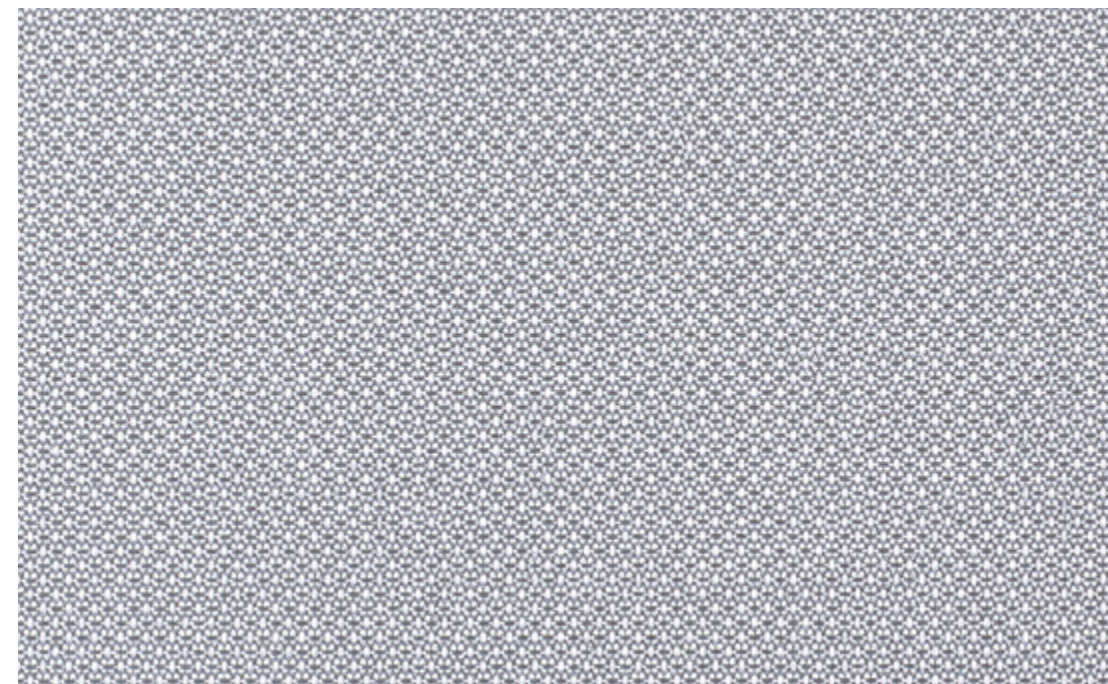




Nr. 122039000002002/Verosol



# EnviroScreen

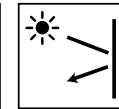
Best performing, sustainable Cradle to Cradle screen with superior visual and thermal comfort

- Best performing Cradle to Cradle screen: Excellent visual and thermal comfort maintained alongside the green credentials
- Screen with a robust textile appearance
- Highest reflection of 74% on metallised polyester screens
- Excellent flame retardancy
- Available in a width up to 3.0 meter

**kvadrat verosol**



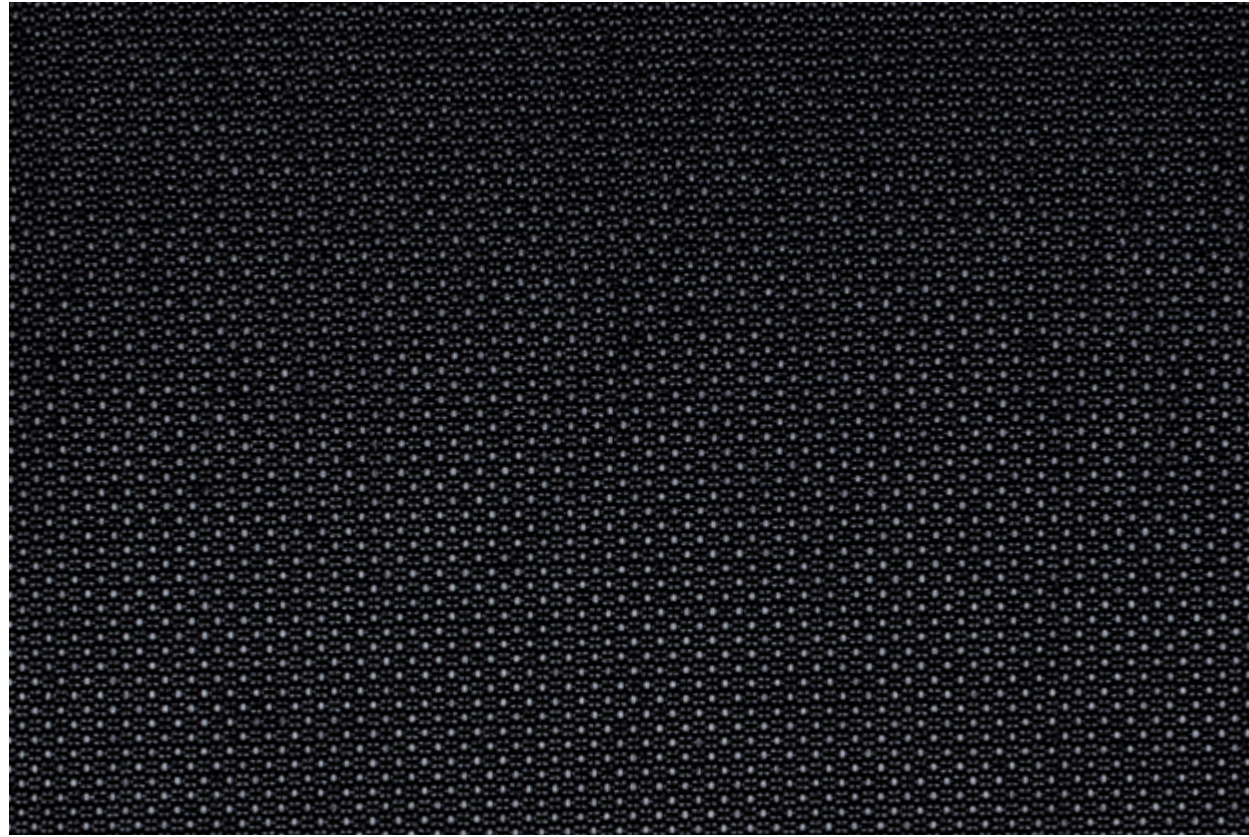
Management System  
ISO 9001:2015  
ISO 14001:2015  
[www.tuv.com](http://www.tuv.com)  
ID: 9186621700



[www.kvadratverosol.nl](http://www.kvadratverosol.nl)



# Transparencies



802  2% OF

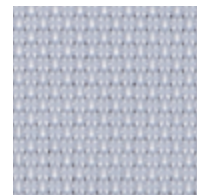
## Colours



741 Sand Beige



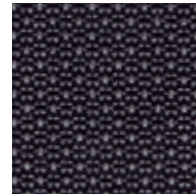
765 Dark Beige



000 Light Grey



936 Steel Grey



998 Dark Grey



829 Black

# Specifications 802 EnviroScreen

	Openness factor	2%
	Thickness (mm)	0.46
	Weight (g/m <sup>2</sup> )	220
	Width (cm)	300 max.
	Composition	Polyester Inherent FR
	IR emissivity (metal side)	0.19
	Flame retardant standards	EN 13501-1 B-s1,d0, DIN 4102 B1, BS 5867 part 2 type B, NFPA 701, AS/NZS 1530.3 (0-0-0-1)
	Environmental standards	Cradle to Cradle (C2C) Bronze, STANDARD 100 Class IV by OEKO-TEX <sup>®</sup> , HPD2.1, RoHS2, REACH, GreenGuard (LEED), GreenGuard Gold, Formaldehyde free, Halogen free, Phthalate free, Antimicrobials free, PVC free

	Light Grey	Black	
	Solar reflectance outside	74%	74%
	Light transmission	4%	2%
	Visual contact according to EN 14501:2021	2	2
	Glare control rating according to EN 14501:2021	3	3

	Solar control double glass <i>(Glazing G EN14501:2021)</i>			Insulating double glass <i>(Glazing F EN14501:2021)</i>			
	Glazing performance	Light Grey	Black	Glazing performance	Light Grey	Black	
	Light Transmission LT value	70%	3%	2%	82%	4%	2%
	Solar heat gain g-value / SHGC	33%	12%	12%	65%	27%	27%
	Insulation U-value (W/m <sup>2</sup> K)	1.0	0.72	0.72	1.1	0.77	0.77

	Solar control triple glass <i>(Glazing I)</i>			Insulating triple glass <i>(Glazing H EN14501:2021)</i>			
	Glazing performance	Light Grey	Black	Glazing performance	Light Grey	Black	
	Light Transmission LT value	64%	3%	2%	74%	4%	2%
	Solar heat gain g-value / SHGC	31%	14%	14%	53%	26%	26%
	Insulation U-value (W/m <sup>2</sup> K)	0.6	0.50	0.49	0.7	0.57	0.56

Optical properties are measured according to EN 14500, ISO 9050, ASTM C1371 & EN 410. For more information about technical data, energy savings and worldwide distribution, refer to [www.kvadratverosol.nl](http://www.kvadratverosol.nl). Disclaimer: The technical data is based on average data and is subject to production tolerances. Subject to misprints, errors and technical modifications. All technical details per colour available upon request.

The colours shown may vary from the supplied fabric due to batch variation in the production process. Please visit [www.kvadratverosol.nl](http://www.kvadratverosol.nl) to order samples of your choice.