



Nr. 122039000002701/Verosol



OmniaScreen

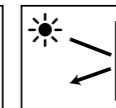
Superb solution for solar protection and light control

- Phthalate free screens with robust look and feel
- Solar reflectance up to 75% provides superb heat and light control
- Openness factor of 3% provides clear view through
- Great price / performance ratio
- Formaldehyde and phthalate-free screen
- Flame retardant
- Available in a width up to 2.8 meter

kvadrat verosol

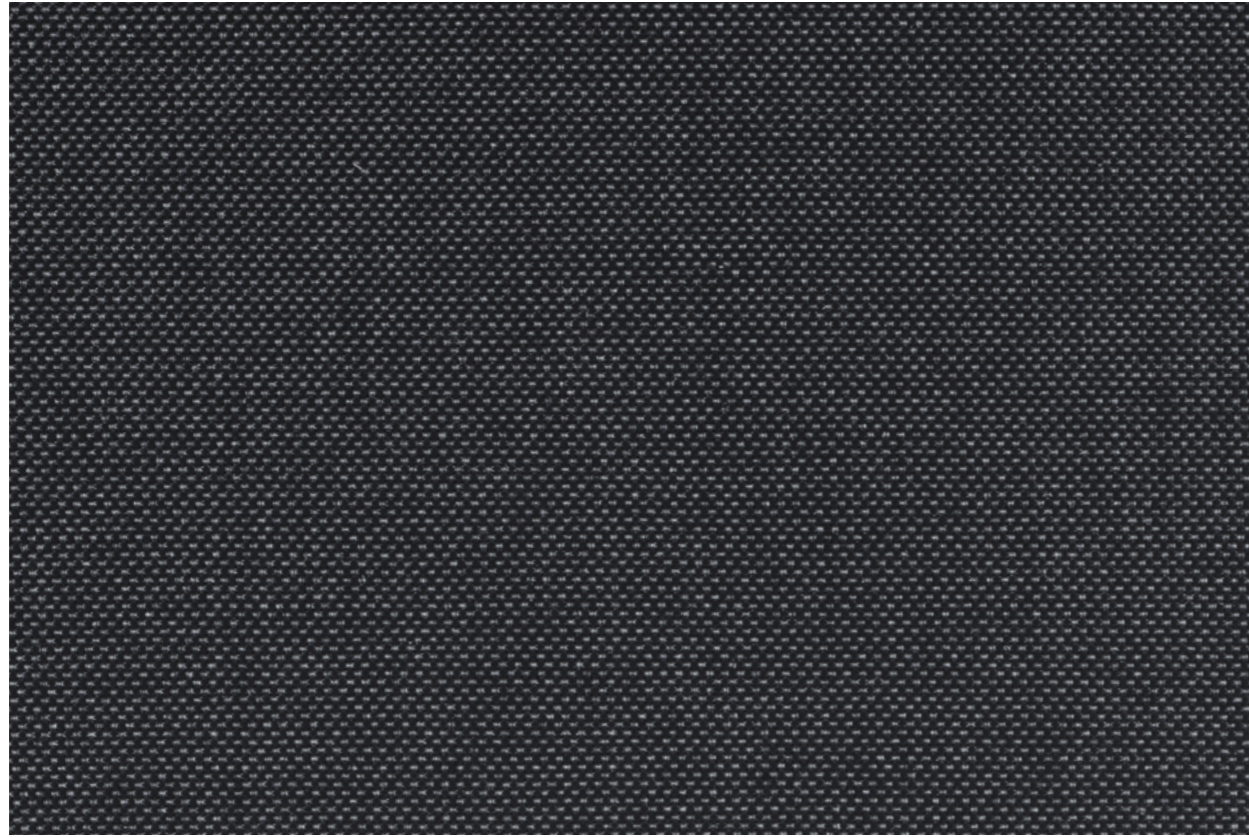


Management System
ISO 9001:2015
ISO 14001:2015
www.tuv.com
ID: 9186621700



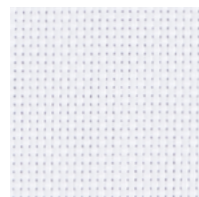
www.kvadratverosol.nl

Transparencies



293 3% OF

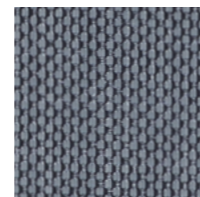
Colours



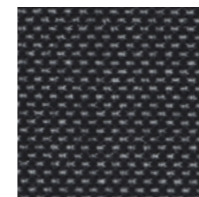
FD01 White (031)



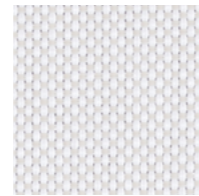
FD03 Light Grey (033)



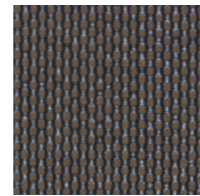
FB02 Dark Grey (012)



FB01 Black (011)



FD02 beige (032)



FB03 Brown (013)

Specifications 293 OmniaScreen

	Openness factor	3%
	Thickness (mm)	0.58
	Weight (g/m ²)	450
	Width (cm)	280 max.
	Composition	75% PVC / 25% PET
	IR emissivity (metal side)	0.14
	Flame retardant standards	EN 13501-1 B-s2,d0, DIN 4102 B1, BS 5867 part 2 type B, NFP 92503 M2, NFPA 701
	Environmental standards	STANDARD 100 Class IV by OEKO-TEX®, HPD2.1, RoHS2, REACH, GreenGuard (LEED), GreenGuard Gold, Formaldehyde free, Phthalate free

	White	Black	
	Solar reflectance outside	75%	75%
	Light transmission	4%	3%
	Visual contact according to EN 14501:2021	2	2
	Glare control rating according to EN 14501:2021	4 ¹	4 ¹

	Solar control double glass (Glazing G EN14501:2021)			Insulating double glass (Glazing F EN14501:2021)			
	Glazing performance	White	Black	Glazing performance	White	Black	
	Light Transmission LT value	70%	4%	3%	82%	4%	3%
	Solar heat gain g-value / SHGC	33%	12%	12%	65%	26%	26%
	Insulation U-value (W/m ² K)	1.0	0.70	0.70	1.1	0.74	0.74
	Solar control triple glass (Glazing I)			Insulating triple glass (Glazing H EN14501:2021)			
	Glazing performance	White	Black	Glazing performance	White	Black	
	Light Transmission LT value	64%	3%	3%	74%	4%	3%
	Solar heat gain g-value / SHGC	31%	13%	13%	53%	25%	25%
	Insulation U-value (W/m ² K)	0.6	0.48	0.48	0.7	0.55	0.55

Optical properties are measured according to EN 14500, ISO 9050, ASTM C1371 & EN 410. For more information about technical data, energy savings and worldwide distribution, refer to www.kvadratverosol.nl. Disclaimer: The technical data is based on average data and is subject to production tolerances. Subject to misprints, errors and technical modifications. All technical details per colour available upon request.
¹Cut off angle =65°, upgrade with 1 class according to EN 14501:2021.

The colours shown may vary from the supplied fabric due to batch variation in the production process. Please visit www.kvadratverosol.nl to order samples of your choice.