

# Loa Ronan and Erwan Bouroullec

Openness factor 17%  
Trevira CS linen look



**kvadrat**

## Specification details

Openness factor	17%
Composition	100% Trevira CS
Fabric width	300 cm (118 inches)
Weight	210 g/m <sup>2</sup>
Thickness	0.7 mm
IR emissivity	0.90
Light fastness	5-7 (ISO105-B02)
Fire tests	BS 5867 part 2 type B, DIN 4102 B1, EN 13773 class 1, IMO FTP code 2010: part 7, NF P 92 507 M1, NFPA 701
Environment	GREENGUARD Gold, Environmental Product Declaration (EPD), Health Product Declaration (HPD). Comply with REACH. PVC free.

## Technical details

Colour	Optical properties acc. to EN 14500:2021 and EN 14501:2021					
	Rs (%)	Ts (%)	Tv (%)	Tuv (%)	Ra	Glare control rating
108	45	50	50	45	99	0
138	40	46	41	40	98	0
168	28	41	30	29	98	0
188	24	39	26	27	99	0
208	44	49	49	45	97	0
238	37	46	41	36	96	0
788	24	31	16	17	99	0
988	22	36	21	23	99	0

Colour	Solar control double glazing G			Solar control triple glazing I		
	gtot/SHGC (%)	Utot-value (W/m <sup>2</sup> K)	Tv, tot (%)	gtot/SHGC (%)	Utot-value (W/m <sup>2</sup> K)	Tv, tot (%)
108	21	0.84	40	21	0.56	37
138	24	0.84	31	24	0.56	29
168	28	0.84	22	27	0.56	20
188	30	0.84	18	28	0.56	17
208	22	0.84	38	22	0.56	36
238	25	0.84	32	24	0.56	29
788	30	0.84	11	28	0.56	10
988	30	0.84	15	29	0.56	14

**Rs:** Solar reflection | **Ts:** Solar transmission | **As:** Solar absorption calculation: 100 - Rs - Ts = As

**Tv:** Visual light transmission | **Tuv:** UV transmission | **Ra:** Colour rendering index

**Glazing G:** g=33% / U=1.0 / Tv=70% (acc. to EN14501: 2021) | **Glazing I:** g=31% / U=0.6 / Tv=64% (with ref. panes acc. to EN 14501:2021)

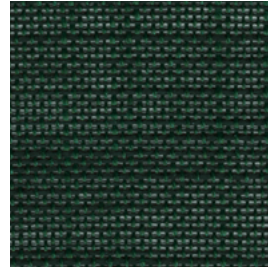
**gtot/SHGC:** Solar heat gain through total fenestration | **Utot:** Thermal heat loss (or gain) through total fenestration

**Tv, tot:** Total light transmission through total fenestration

# Loa



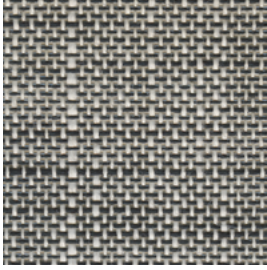
208



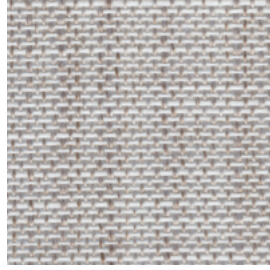
988



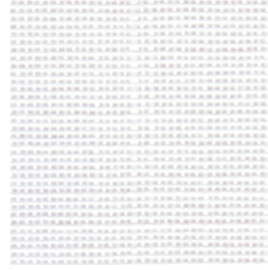
238



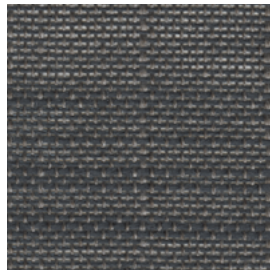
168



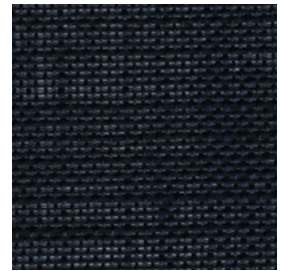
138



108



188



788



## Loa

Design: Ronan & Erwan Bouroullec

### DK

**Anvendelse** Rullegardin.

**Beskrivelse** 100% Trevira CS. Bredde 300 cm. Vægt 210 g/m<sup>2</sup>. Tykkelse 0.7 mm. Garnfarvet. Nuanceforskel kan forekomme.

**Lysægtighed** 5-7 (ISO 105-B02).

**Flammesikring:** BS 5867 part 2 type B. DIN 4102 B1. EN 13 773 class 1. IMO FTP Code 2010 Part 7. NF P 92 507 M1. NFPA 701. (Kopi af testrapport kan rekvireres).

**Vedligeholdelse** Se ISO symboler. Rengør med en tør eller opvredet klud. Brug kun rent vand. Kan også børstes eller støvsuges (nedsat sug) med børste mundstykke. Ved kraftigere tilsmudsning anbefales det at kontakte professionel renseri.

### UK

**Application** Roller blind.

**Description** 100% Trevira CS. Width 300 cm (118 inches). Weight 210 g/m<sup>2</sup>. Thickness 0.7 mm.

Yarn dyed. Colour differences may occur.

**Lightfastness** 5-7 (ISO 105-B02).

**Flame resistance** BS 5867 part 2 type B. DIN 4102 B1. EN 13 773 class 1. IMO FTP Code 2010 Part 7. NF P 92 507 M1. NFPA 701. (Copy of test report available).

**Care** Please see the ISO symbols. Clean with a dry or moist wrung cloth. Only use clean water. Can also be brushed or carefully vacuumed (reduce suction power) with a brush nozzle. In case of considerable staining, we recommend contacting a professional dry cleaner.

### DE

**Anwendungsbereich** Rollos.

**Beschreibung** 100% Trevira CS. Breite 300 cm. Gewicht 210 g/m<sup>2</sup>. Dicke 0.7 mm. Garngefärbt. Farbunterschiede können vorkommen.

**Lichtechtheit** 5-7 (ISO 105-B02).

**Flammschutz:** BS 5867 part 2 type B. DIN 4102 B1. EN 13 773 class 1. IMO FTP Code 2010 Part 7. NF P 92 507 M1. NFPA 701. (Testbericht verfügbar).

**Pflege** Siehe ISO Pflegesymbole. Mit einem trockenen oder feuchten, ausgedrückten Tuch reinigen. Nur sauberes Wasser verwenden. Reinigung durch vorsichtiges Abbürsten oder saugen mit Bürstenaufsatz und reduzierter Leistung möglich. Bei starker Verschmutzung empfehlen wir einen professionellen Reinigungsdienst.

### NL

**Toepassing** Rolgordijn.

**Omschrijving** 100% Trevira CS. Breedte 300 cm. Gewicht 210 g/m<sup>2</sup>. Dikte 0.7 mm. Gareengeverfd. Kleurverschillen kunnen optreden.

**Lichtechtheid** 5-7 (ISO 105-B02).

**Brandwerendheid** BS 5867 part 2 type B. DIN 4102 B1. EN 13 773 class 1. IMO FTP Code 2010 Part 7. NF P 92 507 M1. NFPA 701. (Op aanvraag sturen wij u graag een kopie van het testrapport toe).

**Onderhoud** Zie de ISO symbolen. Schoon deppen met een droge of goed uitgewrongen, vochtige doek. Alleen schoon water gebruiken. Kan ook schoongemaakt worden door middel van een borstel of een stofzuiger met borstelstuk op halve kracht. In het geval van serieuze vlekvorming, raden we aan contact op te nemen met een professionele reiniger.

### FR

**Domaine d'utilisation** Store.

**Description** 100% Trevira CS. Largeur 300 cm. Poids 210 g/m<sup>2</sup>. Épaisseur 0.7 mm. Teinture sur fil. Ecart des coloris possibles.

**Résistance à la lumière** 5-7 (ISO 105-B02).

**Normes au feu** BS 5867 part 2 type B. DIN 4102 B1. EN 13 773 class 1. IMO FTP Code 2010 Part 7. NF P 92 507 M1. NFPA 701. (La copie du compte rendu des tests est disponible sur demande).

**Entretien** Voir les symboles ISO. Nettoyez avec un chiffon sec ou chiffon humide bien essoré. Utilisez uniquement de l'eau propre. Le tissu peut aussi être brossé ou aspiré avec soin (puissance d'aspiration réduite) avec un embout en forme de brosse. Dans le cas où le tissu a été fortement taché, nous suggérons de contacter un pressing professionnel.

### IT

**Destinazione d'uso** Tende a rullo.

**Caratteristiche** 100% Trevira CS. Altezza 300 cm. Peso 210 g/m<sup>2</sup>. Spessore 0.7 mm. Tinto in filo. Possibili differenze per colore.

**Resistenza alla luce** 5-7 (ISO 105-B02).

**Ignifugazione** BS 5867 part 2 type B. DIN 4102 B1. EN 13 773 class 1. IMO FTP Code 2010 Part 7. NF P 92 507 M1. NFPA 701. (Disponibile copia del test).

**Manutenzione** Per favore seguire simboli ISO. Pulire con un panno asciutto o umido strizzato. Utilizzare solo acqua pulita. Può anche essere spazzolato oppure accuratamente aspirato (ridurre la potenza di aspirazione) con un ugello a spazzola. In caso di macchie considerevoli, si consiglia di contattare un lavasecco professionale.

### ES

**Aplicación** Estor.

**Descripción** 100% Trevira CS. Anchura 300 cm. Peso 210 g/m<sup>2</sup>. Grosor 0.7 mm. Teñido en hilo. Posibles variaciones de color.

**Resistencia a la luz** 5-7 (ISO 105-B02).

**Resistencia al fuego** BS 5867 part 2 type B. DIN 4102 B1. EN 13 773 class 1. IMO FTP Code 2010 Part 7. NF P 92 507 M1. NFPA 701. (Copia del informe de ensayos disponible).

**Limpeza** Consulte los símbolos ISO. Limpiar con un paño seco o ligeramente humedecido. Utilizar únicamente agua. También se puede cepillar o aspirar con cuidado (baja intensidad de succión) con una boquilla de cepillo. En caso de manchas considerables, recomendamos contactar con un profesional de limpieza.

### SE

**Användning** Rullgardin.

**Beskrivning** 100% Trevira CS. Bredd 300 cm. Vikt 210 g/m<sup>2</sup>. Tjocklek 0.7 mm. Garnfärgad. Viss nyansskillnad kan förekomma.

**Ljushärdighet** 5-7 (ISO 105-B02).

**Flammskydd** BS 5867 part 2 type B. DIN 4102 B1. EN 13 773 class 1. IMO FTP Code 2010 Part 7. NF P 92 507 M1. NFPA 701. (Kopia av testrapport finns tillgänglig vid förfrågan).

**Underhåll** Se ISO symboler. Rengör med en torr eller fuktad trasa. Använd endast rent vatten. Kan även borstas eller försiktigt dammsugas med ett borstmunstycke. I händelse av fläckar rekommenderar vi att du lämnar in rullgardinen till kemtvätt.

### ZH

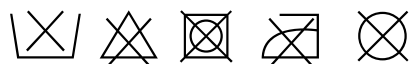
**产品应用** 遮光卷帘。

**产品详情** 100% 德国阻燃丝。幅宽：300厘米。克重：210 克/平方米。厚度：0.7 毫米。色织。可能出现色差。

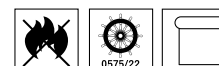
**日晒色牢度** 5-7 (ISO 105-B02)。

**阻燃级别** 英国标准BS 5867 第2部分B级，德国标准DIN 4102 B1，欧洲标准EN 13773 1级，国际海事组织标准IMO FTP Code 2010 第7部分，法国标准NF P 92 507 M1，美国标准NFPA 701。（可提供检测报告副本）。

**保养须知** 请参照ISO标识。用干布或拧干的湿布清洁。只可用清水，也可用毛刷或毛刷吸嘴（减少吸力）小心清理。如脏污较严重，建议联系专业干洗服务。



Contact and further information kvadrat.dk



5 year warranty

**Ronan and Erwan Bouroullec**

Renowned French designers Ronan and Erwan Bouroullec have made a significant impact on the world of design since they began working together in 1997. Their globally acclaimed work includes furniture and product design, interior design, architectural projects, and the development of conceptual objects.

**Loa**

Loa by Ronan and Erwan Bouroullec is constructed with thick slub yarns, which gives the fabric a rich, natural, linen-like expression. The open structure provides clear views of the outside. Loa is woven with two solid yarn colours and include both subtle naturals and rich contrast colours.