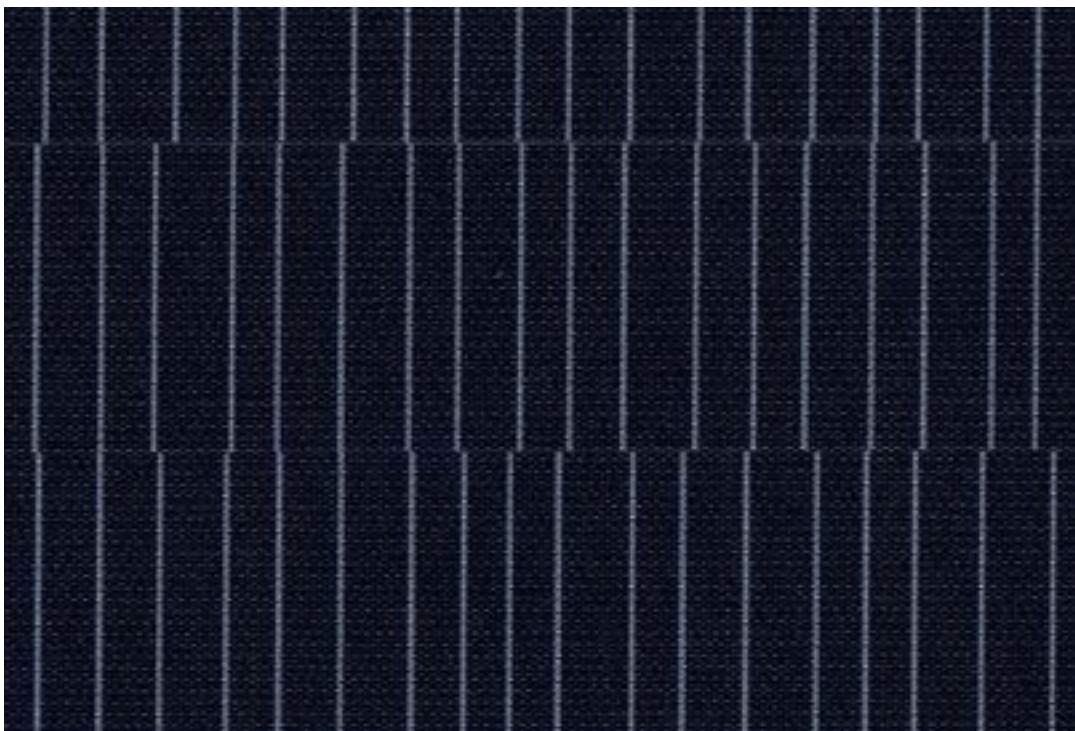


# Apo X Erwan Bouroullec

Openness factor 2%  
Solar reflection 64%  
Acoustic performance 0.40 aw / Class D  
Excellent glare control



**kvadrat shade**

## Specification details

Openness factor	2%
Composition	100% Trevira CS, aluminium backing
Fabric width	240 cm (94.5 inches)
Weight	210 g/m <sup>2</sup>
Thickness	0.40 mm
IR emissivity metal side	0.32
Light fastness	Interior 4-7, Exterior 7 (ISO105-B02)
Fire tests	EN 13501-1 (B-s1, d0), BS 5867 part 2 type B, DIN 4102 B1, NFPA 701, GB 8624 B1, GB 50222 B1, JIS L 1091 A-1 D, EN 13773 class 1
Environment	Cradle to Cradle (C2C) Bronze, GREENGUARD Gold, STANDARD 100 Class IV by OEKO-TEX®, Environmental Product Declaration (EPD), Health Product Declaration (HPD). Comply with REACH and RoHS. Free of intentionally added antimony and PFAS. Halogen free, Phthalate free, Formaldehyde free, Antimicrobials free, PVC free.
Sound absorption	0.40 aw / Class D

## Technical details

Colour	Optical properties acc. to EN 14500:2021 and EN 14501:2021					
	Rs (%)	Ts (%)	Tv (%)	Tuv (%)	Ra	Glare control rating
142	64	5	4	4	95	4
143	64	5	4	4	97	4
153	64	5	3	4	96	4
182	64	4	3	3	97	4
212	64	6	6	5	97	3
213	64	6	6	5	99	3
242	64	5	4	4	97	4
353	64	4	3	3	97	4
933	64	5	4	4	97	4
952	64	5	4	4	96	4
982	64	5	3	4	97	4

Colour	Solar control double glazing G			Solar control triple glazing I		
	g <sub>tot</sub> /SHGC (%)	U <sub>tot</sub> -value (W/m <sup>2</sup> K)	T <sub>v, tot</sub> (%)	g <sub>tot</sub> /SHGC (%)	U <sub>tot</sub> -value (W/m <sup>2</sup> K)	T <sub>v, tot</sub> (%)
142	15	0.76	3	16	0.51	3
143	15	0.76	4	16	0.51	3
153	15	0.76	3	16	0.51	3
182	15	0.76	2	16	0.51	2
212	15	0.76	5	16	0.51	5
213	15	0.76	4	16	0.51	4
242	15	0.76	3	16	0.51	3
353	15	0.76	2	16	0.51	2
933	15	0.76	3	16	0.51	3
952	15	0.76	3	16	0.51	3
982	15	0.76	3	16	0.51	3

**Rs:** Solar reflection | **Ts:** Solar transmission | **As:** Solar absorption calculation: 100 - Rs - Ts = As

**Tv:** Visual light transmission | **Tuv:** UV transmission | **Ra:** Colour rendering index

**Glazing G:** g=33% / U=1.0 / Tv=70% (acc. to EN14501: 2021) | **Glazing I:** g=31% / U=0.6 / Tv=64% (with ref. panes acc. to EN 14501:2021)

**g<sub>tot</sub>/SHGC:** Solar heat gain through total fenestration | **U<sub>tot</sub>:** Thermal heat loss (or gain) through total fenestration

**T<sub>v, tot</sub>:** Total light transmission through total fenestration

These are approximate values. Individual results may vary slightly. The technical data are based on average data and are subject to production tolerances. Subject to misprints, errors and technical modifications.

Apo X



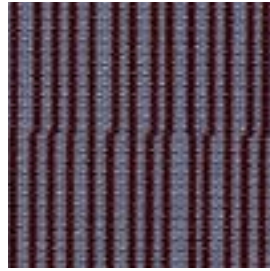
242



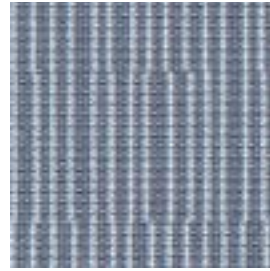
212



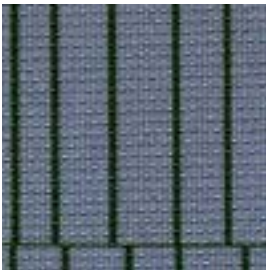
213



353



143



952



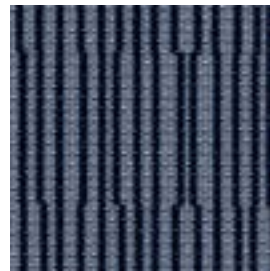
933



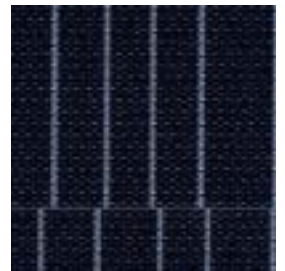
142



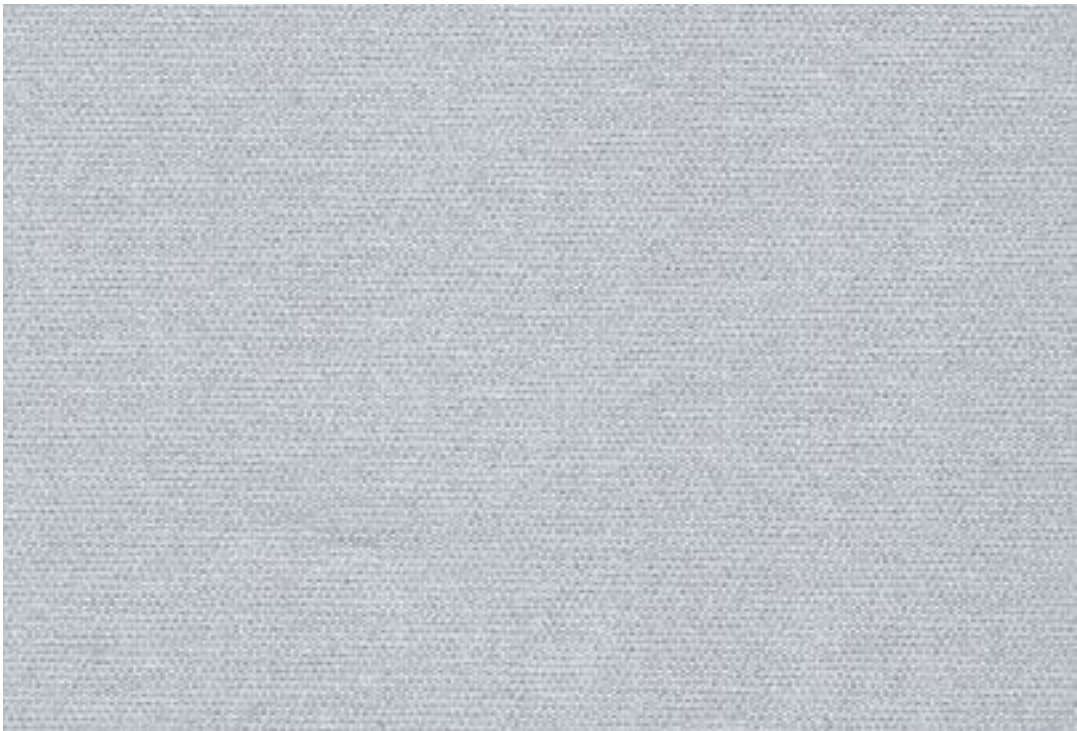
982



153



182



## Apo X

Design: Erwan Bouroullec

DK

**Anvendelse** Rullegardin.

**Beskrivelse** 100% Trevira CS. Alubelægning. Bredde 235 cm. Vægt 210 g/m<sup>2</sup>. Tykkelse 0.40 mm. Transfer tryk. Nuanceforskell kan forekomme.

**Lysægted** Interiør 4-7, Udvendt 7 (ISO 105-B02).

**Flammesikring** EN 13501-1 (B-s1, d0), BS 5867 part 2 type B, DIN 4102 B1, NFPA 701, GB 8624 B1 EN 13773 class 1, GB 50222 B1, JIS L 1091 A-1 D (Kopi af testrapport kan rekvireres).

**Vedligeholdelse** Se ISO symboler. Kan børstes eller støvsuges (laveste sugkraft) med børstemundstykke. Ved kraftigere tilsmudsning anbefales det at kontakte et professionelt renseri.

UK

**Application** Roller blind.

**Description** 100% Trevira CS. Aluminium backing. Width 235 cm (92.5 inches). Weight 210 g/m<sup>2</sup>. Thickness 0.40 mm. Transfer print. Colour differences may occur.

**Lightfastness** Interior 4-7, Exterior 7 (ISO 105-B02).

**Flame resistance** EN 13501-1 (B-s1, d0), BS 5867 part 2 type B, DIN 4102 B1, NFPA 701, GB 8624 B1 EN 13773 class 1, GB 50222 B1, JIS L 1091 A-1 D (Copy of test report available).

**Care** See ISO symbols. Can be brushed or carefully vacuumed (lowest suction power) with a brush nozzle. In case of considerable staining, we recommend contacting a professional dry cleaner.

DE

**Anwendungsbereich** Rollos.

**Beschreibung** 100% Trevira CS. Alubedampft. Breite 235 cm. Gewicht 210 g/m<sup>2</sup>. Dicke 0.40 mm. Transferdruck. Farbunterschiede können vorkommen.

**Lichtechtheit** Innen 4-7. Äußeres 7 (ISO 105-B02).

**Flammschutz** EN 13501-1 (B-s1, d0), BS 5867 part 2 type B, DIN 4102 B1, NFPA 701, GB 8624 B1 EN 13773 class 1, GB 50222 B1, JIS L 1091 A-1 D (Testbericht verfügbar).

**Pflege** Siehe ISO Pflegesymbole. Reinigung durch vorsichtiges Abbürsten oder saugen mit Bürstenaufsatz und niedrigste Saugleistung möglich. Bei starker Verschmutzung empfehlen wir einen professionellen Reinigungsdienst.

NL

**Toepassing** Rolgordijn.

**Omschrijving** 100% Trevira CS. Aluminium backing. Breedte 235 cm. Gewicht 210 g/m<sup>2</sup>. Dikte 0.40 mm. Transfer print. Kleurverschillen kunnen optreden.

**Lichtechtheid** Interieur 4-7. Extérieur 7 (ISO 105-B02).

**Brandwerendheid** EN 13501-1 (B-s1, d0), BS 5867 part 2 type B, DIN 4102 B1, NFPA 701, GB 8624 B1, EN 13773 class 1, GB 50222 B1, JIS L 1091 A-1 D (Op aanvraag sturen wij u graag een kopie van het testrapport toe).

**Onderhoud** Zie de ISO symbolen. Kan schoongemaakt worden door middel van een borstel of een stofzuiger met borstelstuk op laagste zuigkracht. In het geval van serieuze vlekvorming, raden we aan contact op te nemen met een professionele reiniger.

FR

**Domaine d'utilisation** Store.

**Description** 100% Trevira CS. Enduit aluminium. Largeur 235 cm. Poids 210 g/m<sup>2</sup>. Épaisseur 0.40 mm. Impression par transfert. Ecartes des coloris possibles.

**Résistance à la lumière** Intérieur 4-7. Extérieur 7 (ISO 105-B02).

**Normes au feu** EN 13501-1 (B-s1, d0), BS 5867 part 2 type B, DIN 4102 B1, NFPA 701, GB 8624 B1 EN 13773 class 1, GB 50222 B1, JIS L 1091 A-1 D (La copie du compte rendu des tests est disponible sur demande).

**Entretien** Voir les symboles ISO. Le tissu peut être brossé ou aspiré avec soin (puissance d'aspiration minimale) avec un embout en forme de brosse. Dans le cas où le tissu a été fortement taché, nous suggérons de contacter un pressing professionnel.

IT

**Destinazione d'uso** Tende a rullo.

**Caratteristiche** 100% Trevira CS. Rifinito sul retro con alu. Altezza 235 cm. Peso 210 g/m<sup>2</sup>. Spessore 0.40 mm. Transfer print. Possibili differenze per colore.

**Resistenza alla luce** Interno 4-7. Esterno 7 (ISO 105-B02).

**Ignifugazione** EN 13501-1 (B-s1, d0), BS 5867 part 2 type B, DIN 4102 B1, NFPA 701, GB 8624 B1 EN 13773 class 1, GB 50222 B1, JIS L 1091 A-1 D (Disponibile copia del test).

**Manutenzione** Per favore seguire simboli ISO. Può essere spazzolato oppure accuratamente aspirato (potenza di aspirazione minima) con un ugello a spazzola. In caso di macchie considerevoli, si consiglia di contattare un lavasecco professionale.

ES

**Applicación** Estor.

**Decripción** 100% Trevira CS. Reverso de aluminio. Anchura 235 cm. Peso 210 g/m<sup>2</sup>. Grosor 0.40 mm. Impresión digital textil. Posibles variaciones de color.

**Resistencia a la luz** Interior 4-7. Exterior 7 (ISO 105-B02).

**Resistencia al fuego** EN 13501-1 (B-s1, d0), BS 5867 part 2 type B, DIN 4102 B1, NFPA 701, GB 8624 B1, EN 13773 class 1, GB 50222 B1, JIS L 1091 A-1 D (Copia del informe de ensayos disponible).

**Limpieza** Consulte los símbolos ISO. Se puede cepillar o aspirar con cuidado (potencia de succión más baja) con una boquilla de cepillo. En caso de manchas considerables, recomendamos contactar con un profesional de limpieza.

SE

**Användning** Rullgardin.

**Beskrivning** 100% Trevira CS. Aluminiumbaksida. Bredd 235 cm. Vikt 210 g/m<sup>2</sup>. Tjocklek 0.40 mm. Transfertryck. Viss nyansskillnad kan förekomma.

**Ljushärdighet** Interiör 4-7. Exteriör 7 (ISO 105-B02).

**Flammskydd** EN 13501-1 (B-s1, d0), BS 5867 part 2 type B, DIN 4102 B1, NFPA 701, GB 8624 B1 EN 13773 class 1, GB 50222 B1, JIS L 1091 A-1 D (Kopia av testrapport finns tillgänglig vid förfrågan).

**Underhåll** Se ISO symboler. Kan borstas eller dammsugas försiktigt (lägsta sugkraft) med ett borstmunstycke. I händelse av fläckar rekommenderar vi att du lämnar in rullgardinen till kemtvätt.

ZH

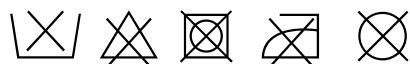
产品应用 遮光卷帘。

产品详情 100% 德国阻燃丝。铝涂层背膜。幅宽：235厘米。克重：210克/平方米。厚度：0.40毫米。转印。可能出现色差。

日晒色牢度 内层：4-7，外层：7 (ISO 105-B02)。阻燃级别 欧洲标准EN 13501-1 (B-s1, d0)，英国标准BS 5867 第2部分B级，德国标准DIN 4102 B1，美国标准NFPA 701，中国标准GB 8624 B1，

欧洲标准EN 13773 1级，中国标准GB 50222 B1，日本标准JIS L 1091 A-1 D。（可提供检测报告副本）。

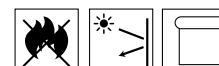
保养须知 请参照ISO标识。可用软毛刷或配备软毛刷吸头的吸尘器（最低吸力档位）进行清洁。如脏污较严重，建议联系专业干洗服务。



Contact and further information kvadrat.dk



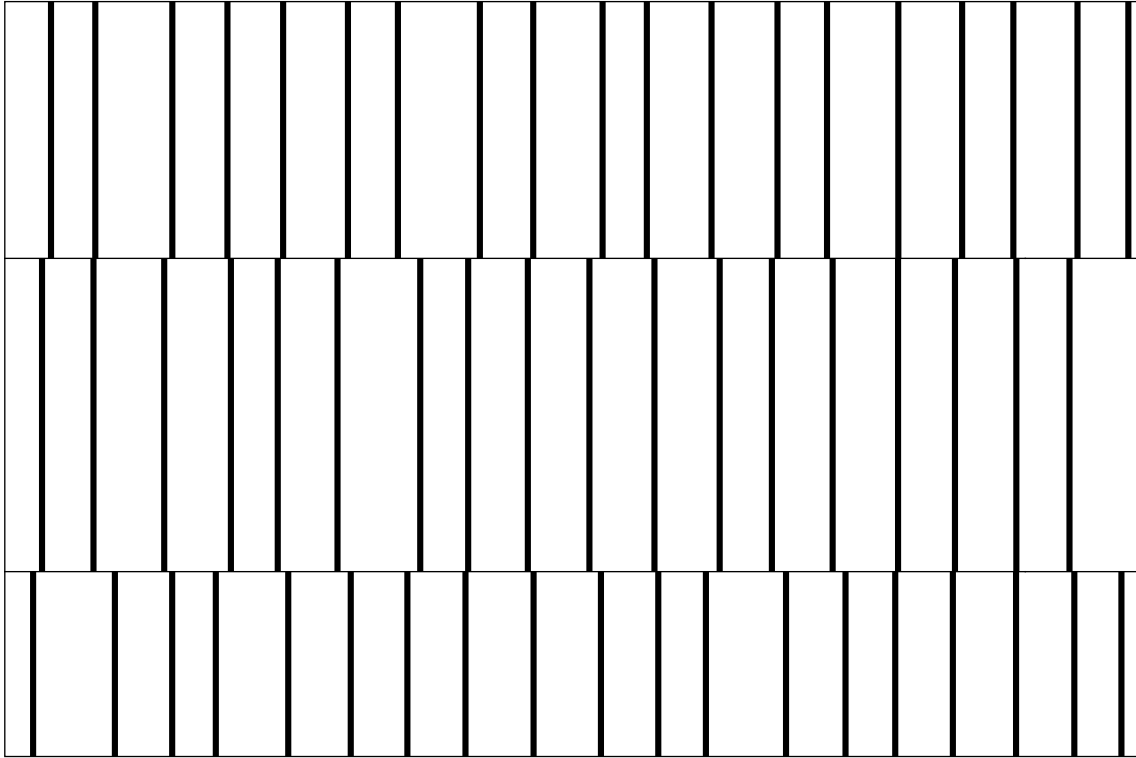
STANDARD  
100  
15.HNL.57853  
Hohenstein



5 year  
warranty

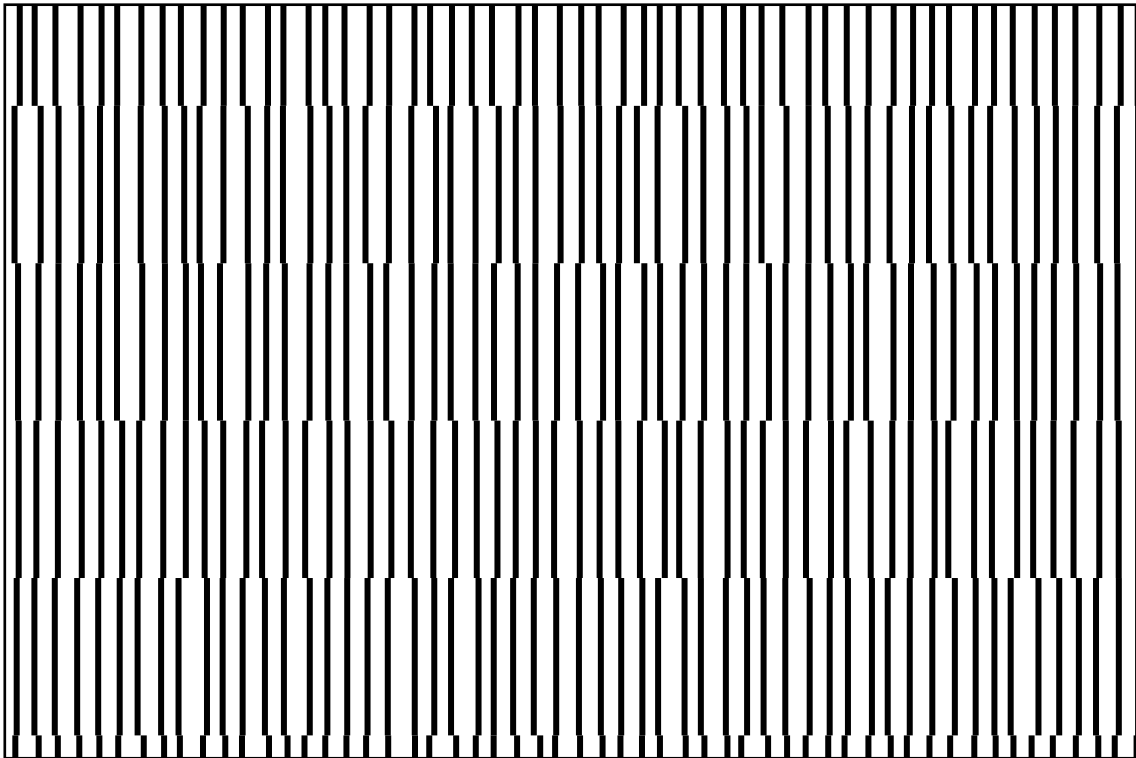
Pattern impression (actual size)

150 x 100 mm



1:1

150 x 100 mm



1:1