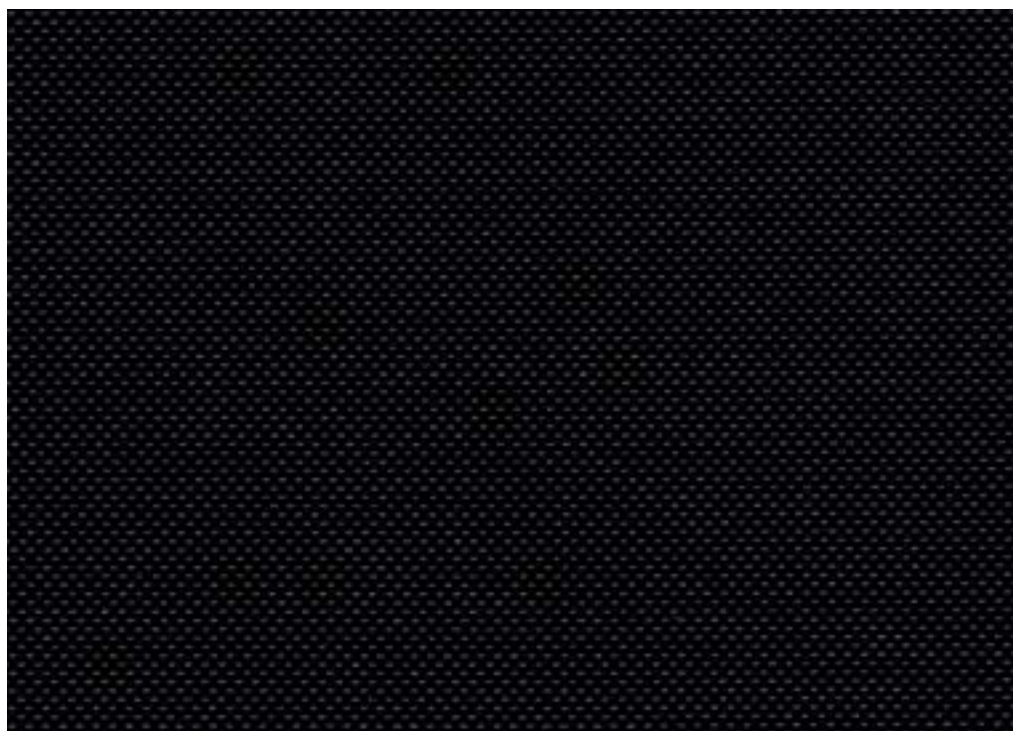


# Retta Blockout Louise Sigvardt

Openness factor 0%  
Yarn-dyed blockout screen textile  
Colour-matched backing



**kvadrat shade**

## Specification details

Openness factor	0%
Composition	Polyester with acrylic FR coating
Fabric width	300 cm (118 inches)
Weight	540 g/m <sup>2</sup>
Thickness	0.65 mm
IR emissivity	0.82
Light fastness	Interior 6-7, Exterior 7-8 (ISO105-B02)
Fire tests	EN 13501-1 (B-s2, d0), BS 5867 part 2 type B, DIN 4102 B1, IMO FTP code 2010: part 7, NFPA 701
Environment	GREENGUARD Gold, STANDARD 100 Class IV by OEKO-TEX®, Environmental Product Declaration (EPD), Health Product Declaration (HPD). Free of intentionally added PFAS. Comply with REACH and RoHS. Phthalate free, Antimicrobials free, PVC free.

## Technical details

Colour	Optical properties acc. to EN 14500:2021 and EN 14501:2021					
	Rs (%)	Ts (%)	Tv (%)	Tuv (%)	Ra	Glare control rating
112	76	0	0	0	N/A	4
142	18	0	0	0	N/A	4
162	18	0	0	0	N/A	4
192	5	0	0	0	N/A	4
222	58	0	0	0	N/A	4

Colour	Solar control double glazing G			Solar control triple glazing I		
	gtot/SHGC (%)	Utot-value (W/m <sup>2</sup> K)	Tv, tot (%)	gtot/SHGC (%)	Utot-value (W/m <sup>2</sup> K)	Tv, tot (%)
112	9	0.84	0	11	0.56	0
142	27	0.84	0	26	0.56	0
162	27	0.84	0	26	0.56	0
192	29	0.84	0	28	0.56	0
222	17	0.84	0	18	0.56	0

**Rs:** Solar reflection | **Ts:** Solar transmission | **As:** Solar absorption calculation:  $100 - Rs - Ts = As$

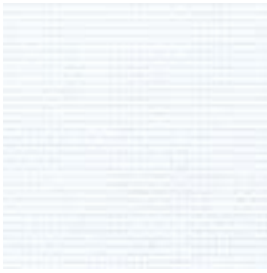
**Tv:** Visual light transmission | **Tuv:** UV transmission | **Ra:** Colour rendering index

**Glazing G:**  $g=33\%$  /  $U=1.0$  /  $Tv=70\%$  (acc. to EN14501: 2021) | **Glazing I:**  $g=31\%$  /  $U=0.6$  /  $Tv=64\%$  (with ref. panes acc. to EN 14501:2021)

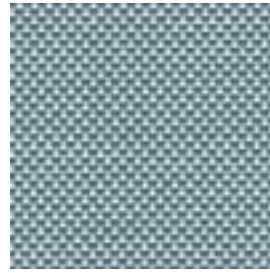
**gtot/SHGC:** Solar heat gain through total fenestration | **Utot:** Thermal heat loss (or gain) through total fenestration

**Tv, tot:** Total light transmission through total fenestration

## Retta Blockout



112



142



162



222



192

The backing of this textile features a colour-matched blockout coating.



## Retta Blockout

Design: Louise Sigvardt

DK

**Anvendelse** Rullegardin.

**Beskrivelse** Garnfarvet polyester med acryl FR belægning. Bredde 300 cm. Vægt 540 g/m<sup>2</sup>. Tykkelse 0.65 mm. Nuanceforskel kan forekomme.

**Lysægted** Indvendigt 6-7, Udvendigt 7-8 (ISO 105-B02).

**Flammesikring** EN 13501-1 (B-s2, d0), BS 5867 part 2 type B, DIN 4102 B1, IMO FTP code 2010: part 7, NFPA 701 (Kopi af testrapport kan rekvireres).

**Vedligeholdelse** Se ISO symboler. Rengør med en tør eller opvredet klud. Brug kun rent vand. Kan også børstes eller støvsuges (nedsat sug) med børste mundstykke. Ved kraftigere tilsmudsning anbefales det at kontakte professionel renseri.

UK

**Application** Roller blind.

**Description** Yarn dyed polyester with acrylate FR coating. Width 300 cm (118 inches).

Weight 540 g/m<sup>2</sup>. Thickness 0.65 mm. Colour differences may occur.

**Lightfastness** Interior 6-7, Exterior 7-8 (ISO 105-B02)

**Flame resistance** EN 13501-1 (B-s2, d0), BS 5867 part 2 type B, DIN 4102 B1, IMO FTP code 2010: part 7, NFPA 701 (Copy of test report available).

**Care** See the ISO symbols. Clean with a dry or moist wrung cloth. Only use clean water. Can also be brushed or carefully vacuumed (reduce suction power) with a brush nozzle. In case of considerable staining, we recommend contacting a professional dry cleaner.

DE

**Anwendungsbereich** Rollos.

**Beschreibung** Garngefärbt Polyester mit Acrylat FR beschichtung. Breite 300 cm. Gewicht 540 g/m<sup>2</sup>. Dicke 0.65 mm. Farbunterschiede können vorkommen.

**Lichtechtheit** Innen 6-7, Äußeres 7-8 (ISO 105-B02)

**Flammschutz** EN 13501-1 (B-s2, d0), BS 5867 part 2 type B, DIN 4102 B1, IMO FTP code 2010: part 7, NFPA 701 (Testbericht verfügbar).

**Pflege** Siehe ISO Pflegesymbole. Mit einem trockenen oder feuchten, ausgedrückten Tuch reinigen. Nur sauberes Wasser verwenden. Reinigung durch vorsichtiges Abbürsten oder saugen mit Bürstenaufsatz und reduzierter Leistung möglich. Bei starker Verschmutzung empfehlen wir einen professionellen Reinigungsdienst.

NL

**Toepassing** Rolgordijn.

**Omschrijving** Garegeverfd polyester met acrylaat FR coating. Breedte 300 cm. Gewicht 540 g/m<sup>2</sup>. Dikte 0.65 mm. Kleurverschillen kunnen optreden.

**Lichtechtheid** Interieur 6-7, Exterieur 7-8 (ISO 105-B02)

**Brandwerendheid** EN 13501-1 (B-s2, d0), BS 5867 part 2 type B, DIN 4102 B1, IMO FTP code 2010: part 7, NFPA 701 (Op aanvraag sturen wij u graag een kopie van het testrapport).

**Onderhoud** Zie de ISO symbolen. Schoon deppen met een droge of goed uitgewrongen, vochtige doek. Alleen schoon water gebruiken. Kan ook schoongemaakt worden door middel van een borstel of een stofzuiger met borstelstuk op lage kracht. In het geval van serieuze vlekvorming, raden we aan contact op te nemen met een professionele reiniger.

FR

**Domaine d'utilisation** Store.

**Description** Teinture sur fil polyester avec revêtement acrylate FR. Largeur 300 cm. Poids 540 g/m<sup>2</sup>. Épaisseur 0.65 mm. Ecart des coloris possibles.

**Résistance à la lumière** Intérieur 6-7, Extérieur 7-8 (ISO 105-B02)

**Normes au feu** EN 13501-1 (B-s2, d0), BS 5867 part 2 type B, DIN 4102 B1, IMO FTP code 2010: part 7, NFPA 701 (La copie du compte rendu des tests est disponible sur demande).

**Entretien** Voir les symboles ISO. Nettoyez avec un chiffon sec ou chiffon humide bien essoré. Utilisez uniquement de l'eau propre. Le tissu peut aussi être brossé ou aspire avec soin (puissance d'aspiration réduite) avec un embout en forme de brosse. Dans le cas où le tissu a été fortement taché, nous suggérons de contacter un pressing professionnel.

IT

**Destinazione d'uso** Tende a rullo.

**Caratteristiche** Tinto in filo poliestere con rivestimento in acrilato FR. Altezza 300 cm. Peso 540 g/m<sup>2</sup>. Spessore 0.65 mm. Possibili differenze per colore.

**Resistenza alla luce** Interno 6-7, Esterno 7-8 (ISO 105-B02)

**Ignifugazione** EN 13501-1 (B-s2, d0), BS 5867 part 2 type B, DIN 4102 B1, IMO FTP code 2010: part 7, NFPA 701 (Disponibile copia del test).

**Manutenzione** Per favore seguire simboli ISO. Pulire con un panno asciutto o umido strizzato. Utilizzare solo acqua pulita. Può anche essere spazzolato oppure accuratamente aspirato (ridurre la potenza di aspirazione) con un ugello a spazzola. In caso di macchie considerevoli, si consiglia di contattare un lavasecco professionale.

ES

**Aplicación** Estor.

**Descripción** Teñido en hilo poliéster con revestimiento de acrilato FR. Anchura 300 cm. Peso 540 g/m<sup>2</sup>. Grosor 0.65 mm. Posibles variaciones de color.

**Resistencia a la luz** Interior 6-7, Exterior 7-8 (ISO 105-B02)

**Resistencia al fuego** EN 13501-1 (B-s2, d0), BS 5867 part 2 type B, DIN 4102 B1, IMO FTP code 2010: part 7, NFPA 701 (Copia del informe de ensayos disponible).

**Limpieza** Consulte los símbolos ISO. Limpiar con un paño seco o ligeramente humedecido. Utilizar únicamente agua. También se puede cepillar o aspirar con cuidado (baja intensidad de succión) con una boquilla de cepillo. En caso de manchas considerables, recomendamos contactar con un profesional de limpieza.

SE

**Användning** Rullgardin.

**Beskrivning** Garnfärgad polyester med flamsäker akrylatbeläggning.

Bredd 300 cm. Vikt 540 g/m<sup>2</sup>. Tjocklek 0.65 mm. Viss nyansskillnad kan förekomma.

**Ljushärdighet** Interiör 6-7, Exteriör 7-8 (ISO 105-B02)

**Flammskydd** EN 13501-1 (B-s2, d0), BS 5867 part 2 type B, DIN 4102 B1, IMO FTP code 2010: part 7, NFPA 701 (Kopia av testrapport finns tillgänglig vid förfrågan).

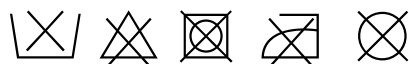
**Underhåll** Se ISO symboler. Rengör med en torr eller fuktad trasa. Använd endast rent vatten. Kan även borstas eller försiktigt dammsugas med ett borstmunstycke. I händelse av fläckar rekommenderar vi att du lämnar in rullgardinen till kemtvätt.

ZH

产品应用：卷帘。  
产品详情纱线染色聚酯纤维，带丙烯酸酯阻燃涂层，带丙烯酸涂层。幅宽：300厘米。克重：540克/平方米。厚度：0.65毫米。色织。可能出现色差。日晒色牢度：内侧6-7级，外侧7-8级。(ISO 105-B02)。

阻燃级别 欧洲标准EN 13501-1 (B-s2, d0) , BS 5867第2部分B型, DIN 4102 B1级, IMO FTP 2010代码第7部分, NFPA 701标准 (测试报告副本可提供)。

保养须知 请参照ISO标识。用干布或拧干的湿布清洁。只可用清水。也可用毛刷或毛刷吸嘴(减少吸力)小心清理。如脏污较严重, 建议联系专业干洗服务。



Contact and further information kvadrat.dk



STANDARD 100  
15.HNL.57853  
Hohenstein



5 year warranty

**Retta Blockout**

*Retta Blockout* is a roller blind textile designed by Louise Sigvardt, offering a refined woven expression that unites elegant tactility with total light exclusion. Made with up to three differently coloured yarns, it reveals subtle depth and sophistication. This is further enhanced by a colour-matched backing, which ensures a harmonious appearance from both sides of the blind, creating a refined and cohesive look, enhancing visual harmony in interior spaces.

*Retta Blockout* is part of the *Retta* family, together with the screen textile *Retta* and the metallised version *Silvretta*. Together, they offer a complementary range of roller blind solutions, uniting refined design with different performance levels.

**Louise Sigvardt**

Louise Sigvardt is a co-founder of the acclaimed Bunn Studio, working across fashion, architecture, and design. In recent years, they have collaborated with the celebrated fashion brands Everlane and Marimekko, and the furniture house Radnor. Their work has been recognised with numerous awards and showcased in leading international magazines.

Louise's background as a textile designer is evident in Bunn's rich yet minimal approach to design where texture is always a key element. For Louise, design is an immersive experience that begins with a narrative, an emotion or a captivating visual. She cites the application of textiles as the motivation in her career; *"I found out that I loved working with textiles, but what fascinates me even more, are all the different areas of application."*